

## ABOUT

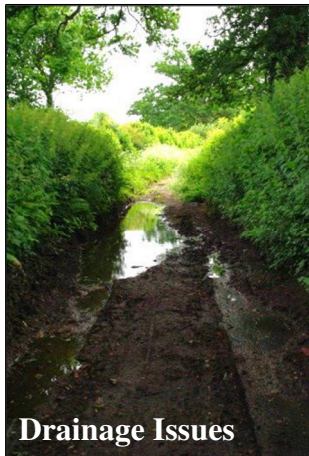
Little Lane has, for many years, been unmaintained. It has fallen into disrepair.

Over the last year a group of volunteers has removed much of the accumulated mud, identified and improved some of the major drainage problems.

LITTLE LANE is now passable  
**WITH CARE AND GOOD BOOTS**  
for most of the year.

### FUNDING IS NOW NEEDED TO:

- Finish stripping off mud and expose remaining problems with the base.
- Solve remaining drainage problems.
- Lay and compact a new base where required.
- Provide a top surface suitable for all users.
- Reinstate the 'bridge' safety rail.
- Add signage and street furniture.



# LITTLE LANE

## A SUSTAINABLE LINK TO THE NORTH DORSET TRAILWAY

FOR

**CYCLISTS**

**HORSE-RIDERS**

**WALKERS**



### THE COMPLETED PROJECT WILL PROVIDE:

- A sustainable link to the North Dorset Trailway, Shillingstone Station, Child Okeford and beyond.
- Another leisure choice (for local and long distance walkers and cyclists).
- Improved safety for walkers and cyclists (by avoiding Shillingstone Lane and Castle Lane).
- A healthy way to get from A to B. Walking and cycling improves health and helps prevent problems like diabetes and high blood pressure.
- Improved access to/from Okeford Fitzpaine for mobility scooter users.
- Support for local assets (our pub, shop, church, school, Shillingstone Station etc.).
- Road relief (by encouraging use of other transport choices).
- A reduced carbon footprint in Okeford Fitzpaine and the Blackmore Vale.

### WOULD YOU LIKE TO KNOW MORE?

**Contact:** Jeremy Gartside  
(Parish Rights-of-Way Officer)  
**Tel.:** 01258 860157

